

IO6: Negotiating social, political, or ethical dimensions in SSI

AIMS OF THE MODULE

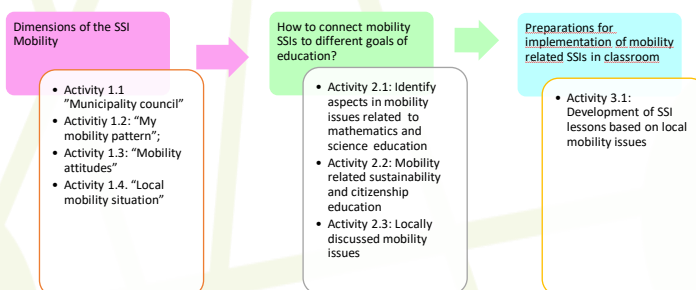
In this module future teachers in initial teacher education are exploring the topic of mobility and learning about its potential as an SSI. Based on their own experiences they identify social, political, ethical, and ecological perspectives of mobility. They learn how to take up mobility-related current issues from the local context of the children and to design SSI learning activities based on this.

DIMENSIONS OF MOBILITY

SCIENCE & TECHNOLOGY <ul style="list-style-type: none"> physical and chemical basics of engines Measurement technology for noise or speed 	POLICY <ul style="list-style-type: none"> Who decides on public transport services? Are the needs of young people adequately represented? 	FAIRNESS AND EQUALITY <ul style="list-style-type: none"> Mobility Poverty rural vs. urban areas gender-specific mobility patterns Participation in social life Commuting to school or work
ECONOMY <ul style="list-style-type: none"> Transport industry Road pricing Transportation of goods 	INDIVIDUAL VALUES AND GOALS <ul style="list-style-type: none"> Job plans Individual freedom vs responsibility ethical approach 	ECOLOGY <ul style="list-style-type: none"> Land consumption Traffic Noise Greenhouse gases



MODULE STRUCTURE



Dr. Andrea Frantz-Pittner
Institute of Instructional and School
Development (IUS) University of Klagenfurt
Andrea.frantz@aau.at

TEACHING AND LEARNING METHODS

- Collecting data on mobility issues in their living area
- Roleplays to identify social, political, ethical and ecological perspectives of mobility.
- Linking mobility issues and curriculum content, sustainability goals and citizenship competences
- Analyzing SSI teaching elements in teaching examples on the topic of mobility
- Developing their own exercises and lesson plans